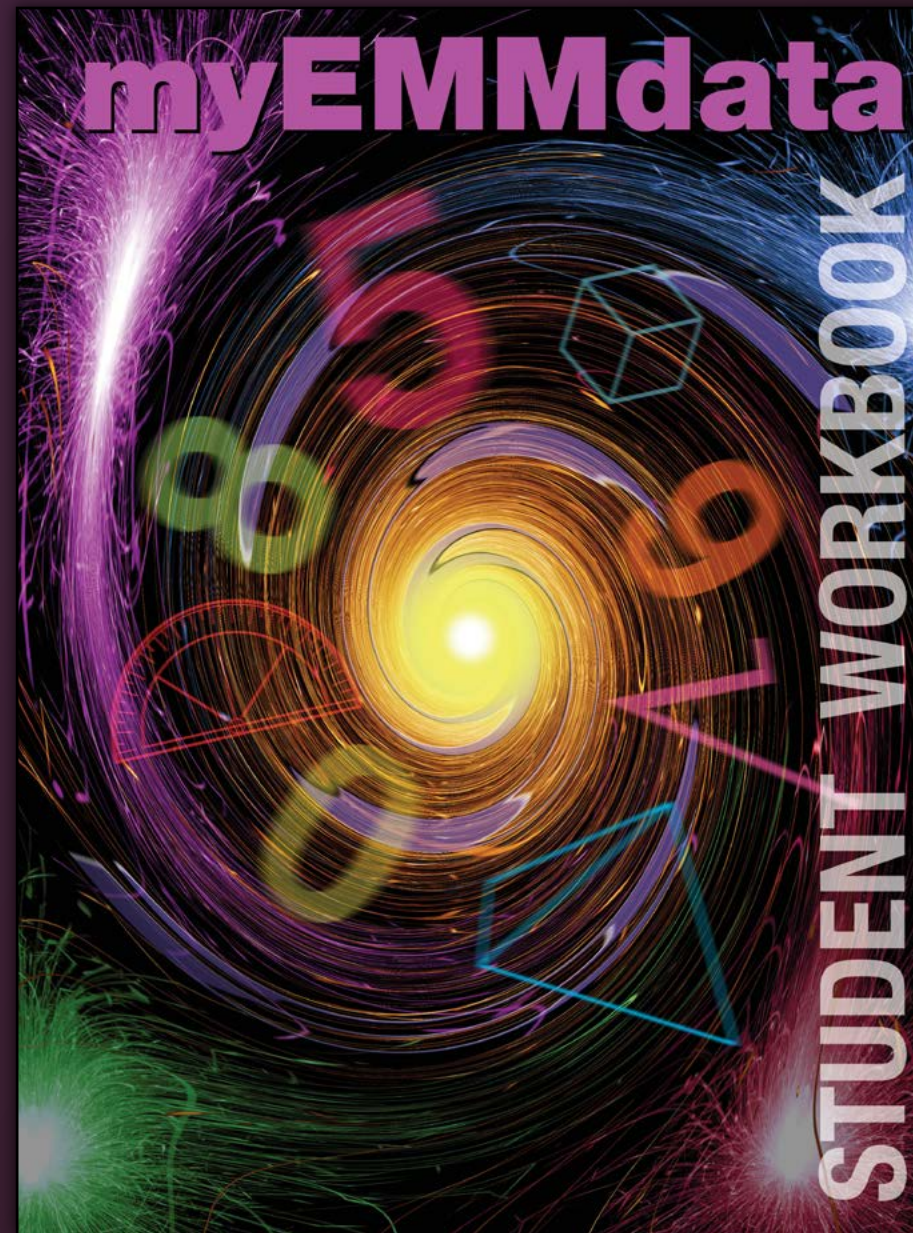


Student Workbook

Electronic Reference Stimuli

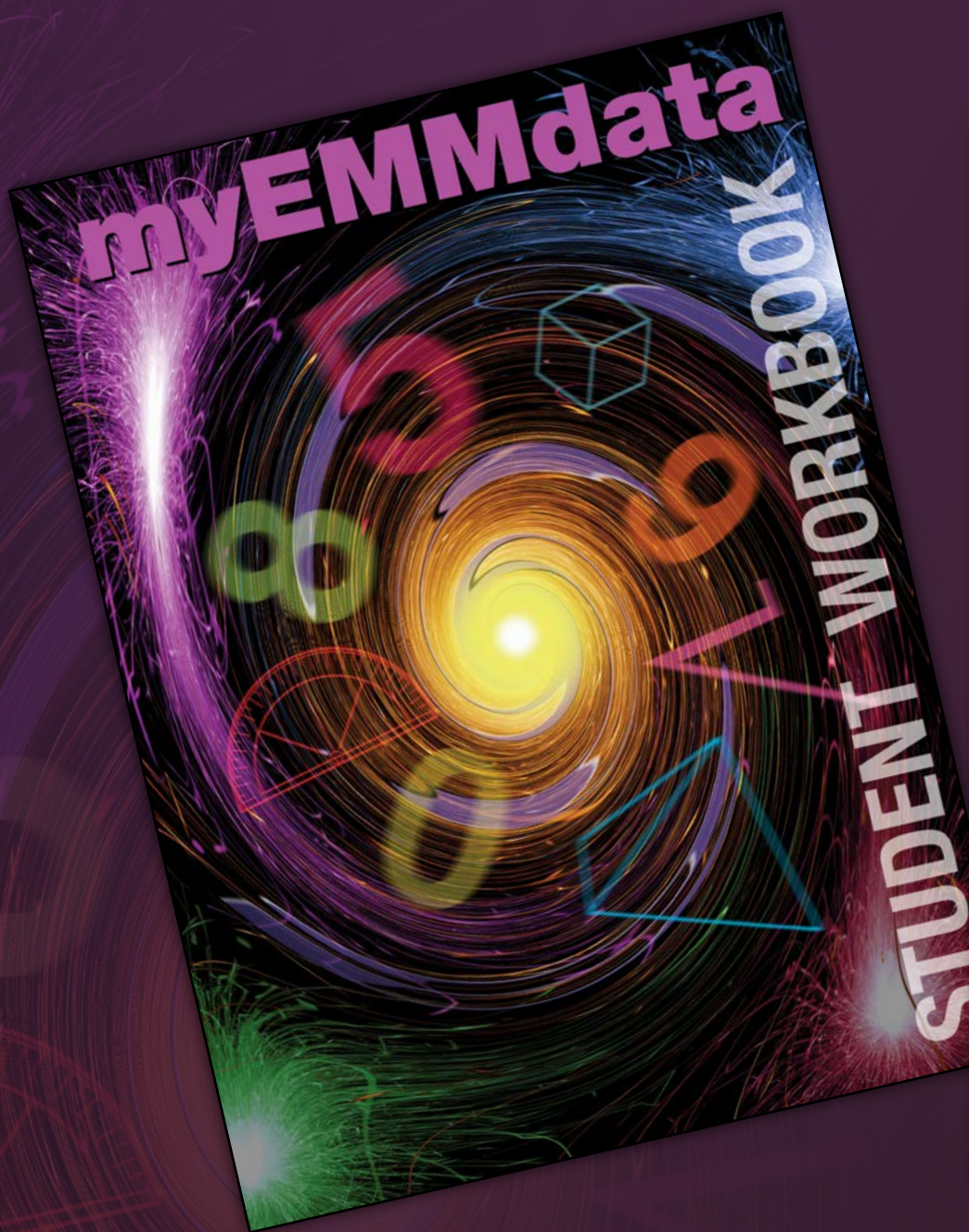
To close Full Screen mode,
press Ctrl+L (PC) or Cmd+L (Mac) or Esc.

To open Full Screen mode,
press Ctrl+L (PC) or Cmd+L (Mac).



Contents

Letter to Student	3
Daily Data	4
Round 1–3 Tasks	5
Round 5–7 Tasks	6
Round 9–11 Tasks	7
Round 13–15 Tasks	8
Round 17–19 Tasks	9
Round 21–23 Tasks	10
Round 25–27 Tasks	11
Round 29–31 Tasks	12
Self-evaluation	13



LETTER TO STUDENT

Dear Student

This is your myEMMdata workbook. Over the course of the EMM program it will show how well your abilities in mathematics are developing. It is allocated to you, and you alone, so please fill in your details on the back cover.

Here's an explanation of the myEMMdata components.

Workbook components

Daily Data: Daily, you record and summarise your own data. For incorrect responses, classified as Bugs, you shade the BugKey in the corresponding row on the BugBoard. This allows you and your teacher to monitor your progress.
For example, see myEMMdata pages 2–9.

Visual representation: This provides you with base knowledge and daily practice in reading and interpreting data to prepare you for the Round task.
For example, see myEMMdata pages 2–9.

Round task: EMM is structured into 32 rounds each consisting of 5 lessons. At the end of each round you read, interpret and complete tables and graphs building on the Visual representation knowledge you have acquired.
For example, see myEMMdata pages 24–25.

Self-evaluation: After each group of 20 lessons you self-evaluate and reflect on your growth in knowledge, understanding and achievement.
For example, see myEMMdata pages 12–13.

EMMathon: To demonstrate your BugFree status you do an EMMathon, which consists of questions you have already done. This will help assess how well you have consolidated your knowledge.
For example, see myEMMdata pages 14–15.

EMMathon to BugFree: You convert your scores to percentages to determine your BugFree status. This helps you to concentrate on personal growth rather than comparing yourself with other students.
For example, see myEMMdata pages 58–61.

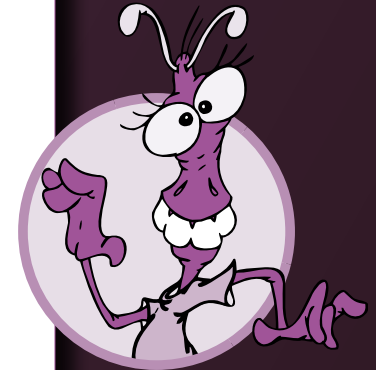
Challenge: This is designed to stimulate your thinking processes. It requires you to reflect on what you have learned.
See myEMMdata pages 122–125.

Club BugFree Award: This is awarded when you score all correct responses over a number of consecutive lessons (to be decided by your teacher).
See myEMMdata pages 127–133.

Other Awards: Accurate marking; Neat workbook.
See myEMMdata pages 135–141.

Your myEMMdata workbook is an important academic journal that records your progress in mathematics. I hope you will enjoy using it, and take pride in keeping it accurate and true. You never know, you might like to share it with family and friends or perhaps even me.

Best Wishes
Dr Rhonda Farkota

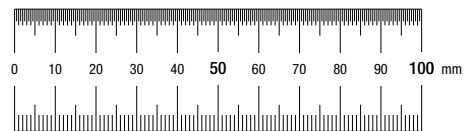


Daily Data

WORKSPACE

Lesson 1	
Lesson 2	
Lesson 3	
Lesson 4	
Lesson 5	

Date
Round 1
Question 1
Question 2
Question 3
Question 4
Question 5
Question 6
Question 7
Question 8
Question 9
Question 10
Question 11
Question 12
Question 13
Question 14
Question 15
Question 16
Question 17
Question 18
Question 19
Question 20
My score
Out of

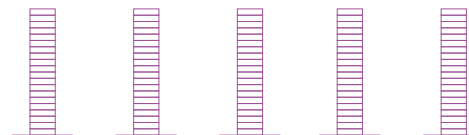


For each Lesson the whole of my data is represented in a bar made of 20 rectangles. From the baseline, I summarise my data by shading the number of rectangles equal to my score.

DAILY DATA

Lesson 1	Lesson 2	Lesson 3	Lesson 4	Lesson 5	BugBoard					
					1	2	3	4	5	
										1
										2
										3
										4
										5
										6
										7
										8
										9
										10
										11
										12
										13
										14
										15
										16
										17
										18
										19
										20
20	20	20	20	20						

Visual representation



After recording and summarising my data for these 5 lessons, I go to page 10 and complete my Task for this Round.

Round 1–3 Tasks

TALLY AND FREQUENCY TABLE

Lesson 1: Our scores		
Score	Tally	Frequency
0		
1–2		
3–4		
5–6		
7–8		
9–10		
11–12		
13–14		
15–16		
17–18		
19–20		4
TOTAL		

RECORD TABLE

Round	1					2					3				
Lesson	1	2	3	4	5	6	7	8	9	10	11	12	13	14	15
My score															
TOTAL															

TALLY AND FREQUENCY TABLE

Lessons 1–15: My scores		
Score	Tally	Frequency
0		
1–2		
3–4		
5–6		
7–8		
9–10		
11–12		
13–14		
15–16		
17–18		
19–20		
TOTAL		

ROUND 3 TASK Extra writing space

STEP 5

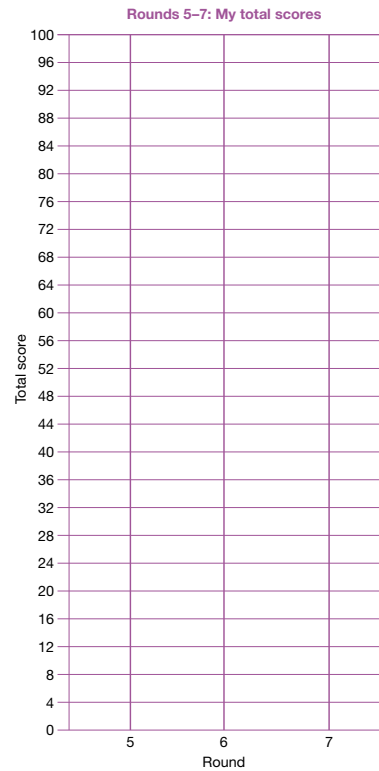
STEP 6

Round 5-7 Tasks

RECORD TABLE

Round	5					6					7				
Lesson	21	22	23	24	25	26	27	28	29	30	31	32	33	34	35
My score															
TOTAL															

GRAPH



TALLY AND FREQUENCY TABLE

Lessons 21-35: My scores		
Score	Tally	Frequency
0		
1-2		
3-4		
5-6		
7-8		
9-10		
11-12		
13-14		
15-16		
17-18		
19-20		
TOTAL		

ROUND 7 TASK Extra writing space

STEP 5

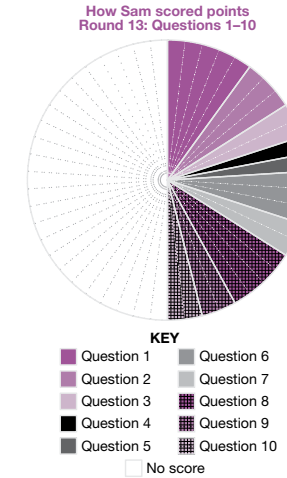
STEP 6

Round 13–15 Tasks

RECORD TABLE

How Sam scored points Round 13: Questions 1–10					
Round	13				
Lesson	61	62	63	64	65
Question 1 Addition	✓	✓	✓	✓	✓
Question 2 Subtraction		✓	✓		✓
Question 3 Multiplication	✓	✓			
Question 4 Division				✓	
Question 5 Number patterns			✓		
Question 6 Equation and inverse operations	✓	✓			✓
Question 7 Whole number properties				✓	✓
Question 8 Fractions		✓	✓	✓	✓
Question 9 Decimals				✓	✓
Question 10 Measurement				✓	✓

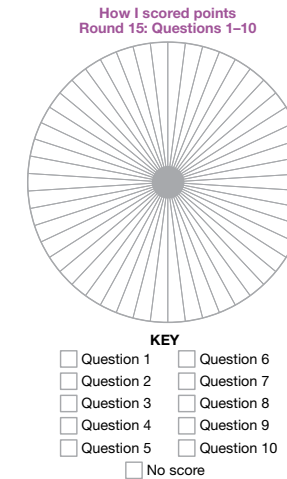
GRAPH



RECORD TABLE

How I scored points Rounds 14 and 15: Questions 1–10												
Round	14						15					
Lesson	66	67	68	69	70	71	72	73	74	75		
Question 1 Addition												
Question 2 Subtraction												
Question 3 Multiplication												
Question 4 Division												
Question 5 Number patterns												
Question 6 Equation and inverse operations												
Question 7 Whole number properties												
Question 8 Fractions												
Question 9 Decimals												
Question 10 Measurement												

GRAPH



Round 17–19 Tasks

TALLY AND CUMULATIVE FREQUENCY TABLE

Lesson 81: Our scores			
Score	Tally	Frequency	Cumulative frequency
0		0	0
1–2		1	1
3–4		2	3
5–6		4	7
7–8		5	12
9–10		2	14
11–12		1	15
13–14		3	
15–16		6	24
17–18		1	25
19–20		1	
TOTAL			

RECORD TABLE

Round	17					18					19				
Lesson	81	82	83	84	85	86	87	88	89	90	91	92	93	94	95
My score															
TOTAL															

TALLY AND CUMULATIVE FREQUENCY TABLE

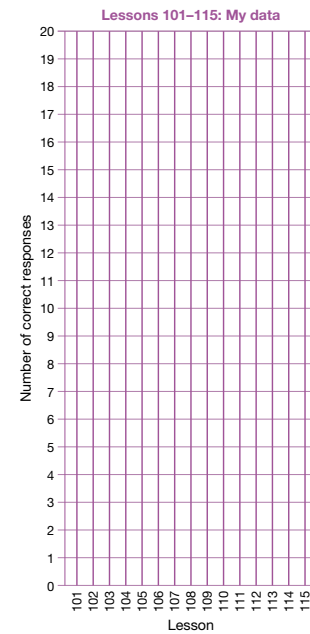
Lessons 81–95: My scores			
Score	Tally	Frequency	Cumulative frequency
0			
1–2			
3–4			
5–6			
7–8			
9–10			
11–12			
13–14			
15–16			
17–18			
19–20			
TOTAL			

Round 21–23 Tasks

RECORD TABLE

Round	21					22					23				
Lesson	101	102	103	104	105	106	107	108	109	110	111	112	113	114	115
Number of correct responses Questions 1–10															
Number of correct responses Questions 11–20															
My score															
TOTAL															

GRAPH



KEY
 ☒ Questions 1–10
 ☒ Questions 11–20
 ☒ Score

TALLY AND CUMULATIVE FREQUENCY TABLE

Lessons 101–115: My scores

Score	Tally	Frequency	Cumulative frequency
0			
1–2			
3–4			
5–6			
7–8			
9–10			
11–12			
13–14			
15–16			
17–18			
19–20			
TOTAL			

ROUND 23 TASK Extra writing space

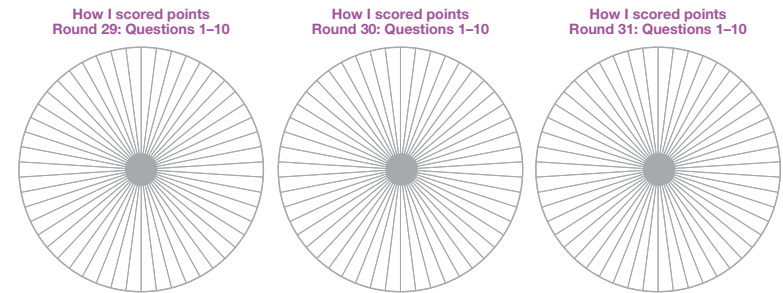
STEP 7

Round 29–31 Tasks

RECORD TABLE

How I scored points Round 29, 30 and 31: Questions 1–10															
Round	29					30					31				
Lesson	141	142	143	144	145	146	147	148	149	150	151	152	153	154	155
Question 1 Addition															
Question 2 Subtraction															
Question 3 Multiplication															
Question 4 Division															
Question 5 Number patterns															
Question 6 Equation and inverse operations															
Question 7 Whole number properties															
Question 8 Fractions															
Question 9 Decimals															
Question 10 Measurement															

GRAPH



- KEY**
- Question 1
 - Question 2
 - Question 3
 - Question 4
 - Question 5
 - Question 6
 - Question 7
 - Question 8
 - Question 9
 - Question 10
 - No score

Self-evaluation

I enter my data in the table on the facing page then complete the Self-evaluation below.

EMM Student Self-evaluation

Lessons 1 to 20

Name _____ Date ____/____/____

In the last twenty lessons my scores are as follows:

	Score	Out of
1 Addition		20
2 Subtraction		20
3 Multiplication		20
4 Division		20
5 Number patterns		20
6 Equations and inverse operations		20
7 Whole number properties		20
8 Fractions		20
9 Decimals		20
10 Measurement		20
11 Space		20
12 Geometry		20
13 Average, percentage, ratio, chance		20
14 Math language		20
15 Money		20
16 Time		20
17 Algebra		20
18 Visual perception		20
19 Data analysis		20
20 Problem solving		20

From these scores I make the following assessment of my progress:

- My EMM strand of strength is _____

because _____

- The EMM strand I most need to improve is _____

- I can improve my overall EMM scores by _____

- The amount of effort I put into these lessons was _____

- At the moment EMM is making me feel _____

My teacher's comment:

MY TOTAL SCORE

	Round 1	Round 2	Round 3	Round 4	My score	Out of
Question 1 Addition						20
Question 2 Subtraction						20
Question 3 Multiplication						20
Question 4 Division						20
Question 5 Number patterns						20
Question 6 Equations and inverse operations						20
Question 7 Whole number properties						20
Question 8 Fractions						20
Question 9 Decimals						20
Question 10 Measurement						20
Question 11 Space						20
Question 12 Geometry						20
Question 13 Average, percentage, ratio, chance						20
Question 14 Math language						20
Question 15 Money						20
Question 16 Time						20
Question 17 Algebra						20
Question 18 Visual perception						20
Question 19 Data analysis						20
Question 20 Problem solving						20